



Utilities

Solutions for Your Infrastructure Needs

Jones Edmunds is a multi-disciplinary firm with over 130 Florida-based Associates with engineering capabilities and experience including:

- Water, Wastewater, and Reclaimed Water Master Plans
- Condition Assessment for Water, Wastewater, and Stormwater Systems
- Sanitary Sewer Evaluations, Sanitary Sewer Overflow Corrective Actions, Repair and Replacement
- Wastewater Collection, Transmission, and Distribution
- Water Supply, Water Use, and Consumptive Use Permitting
- Water and Wastewater Treatment Plant Design
- Operating Permit Renewal and Substantial Modifications
- Utilities Asset Management System Development/GIS/Geospatial Services
- Operational Evaluation and Consulting



50

Over 50 years of Utility work in Florida



100M+

Improvements Designed Annually



40+

Utility Clients Annually



50+

Utility Professionals in Florida

PROJECT HIGHLIGHT

City of Clearwater

Jones Edmunds has been working with the City to improve the function of the Marshall Street Water Reclamation Facility (WRF) since the early 2000s, with over 25 projects completed over the past 20 years.



VIEW MORE PROJECT HIGHLIGHTS

PROJECT HIGHLIGHT

Charlotte County

We provided a preliminary engineering report, final design, FDEP major permit modification, and construction administration services for a phased expansion of the 6-MGD East Port Water Reclamation Facility to 9-MGD.



VIEW MORE PROJECT HIGHLIGHTS

Jones Edmunds delivers comprehensive utility solutions to achieve the lowest cost of ownership for our clients



Precision



Innovative Design



Expertise



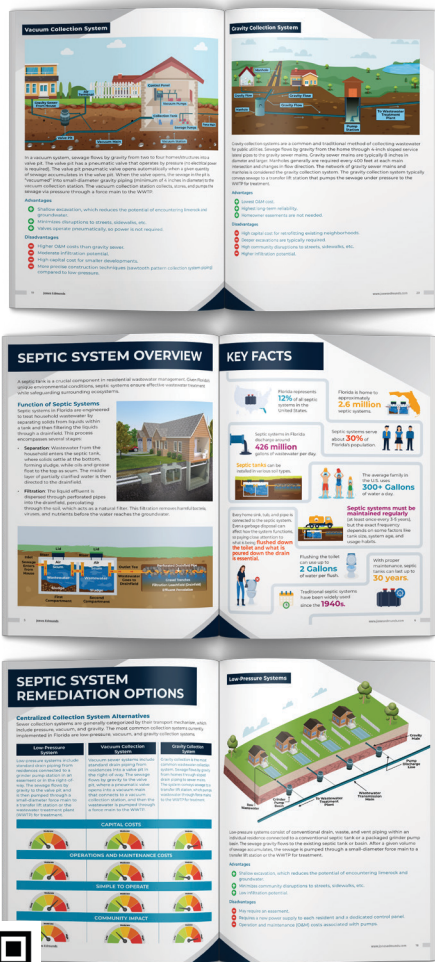
Insight.



Industry Leader

SEPTIC TO SEWER GUIDANCE DOCUMENT

Since 1993, we have continually been engaged in projects focused on eliminating septic tanks in the pursuit of water quality improvements. Learn more with our **2025 Septic to Sewer Comprehensive Guidebook**, which provides an extensive overview of septic to sewer conversion tailored specifically for Florida's distinctive environmental and legislative context.



LEARN MORE

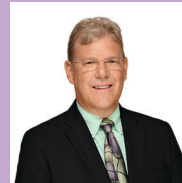
For more information,
contact one of our experts.



Alan Foley, PE
Managing Director
afoley@jonesedmunds.com



Tom Friedrich, PE, BCEE
Senior Consultant
tfriedrich@jonesedmunds.com



Bill Lynch, PE
Senior Manager
blynch@jonesedmunds.com



Brett Goodman, PE
Executive Director - Strategic Growth
bgoodman@jonesedmunds.com



Kelly Flowers Hass, MBA
Marketing Director
kflowers@jonesedmunds.com

JonesEdmunds.com 800.237.1053

LinkedIn Facebook Instagram X YouTube

Alachua | Jacksonville | Sarasota | Tampa | Titusville | Winter Haven